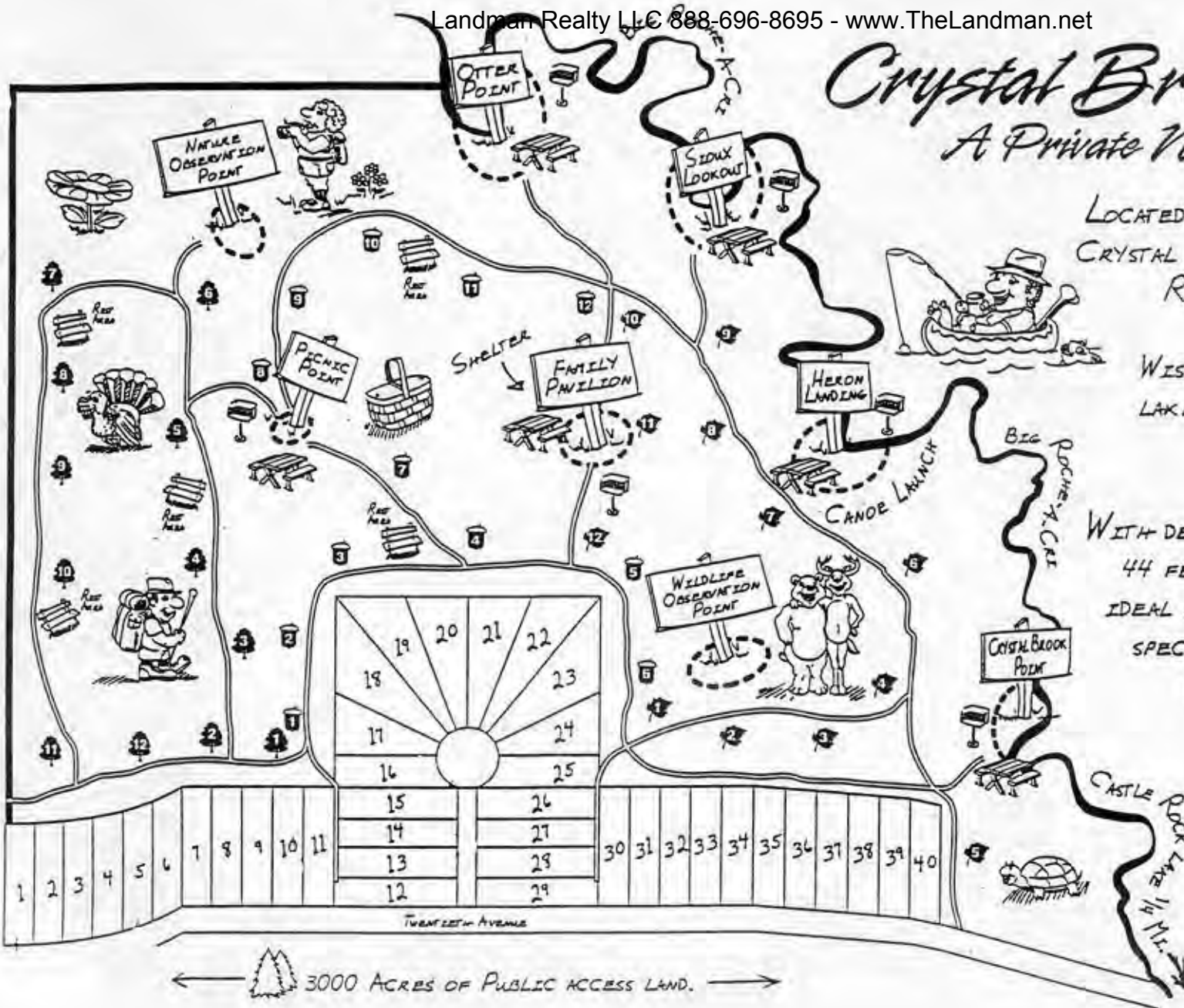


Crystal Brook Woods

A Private Nature Conservancy

LOCATED WITHIN SEVERAL MILES OF CRYSTAL BROOK WOODS ARE CASTLE ROCK AND PETENWELL LAKES, WHICH ARE FED BY THE WISCONSIN RIVER. THESE TWO LAKES ARE COMPRISED OF SOME 37,000 ACRES OF WATER

WITH DEPTHS RANGING FROM 36 TO 44 FEET THESE WATERS PROVIDE IDEAL HABITAT FOR MANY AQUATIC SPECIES INCLUDING LARGE AND SMALLMOUTH BASS, WALLEYE AND PANFISH.



John Olson
"Landman"

311 State Hwy 21
Friendship Wi. 5393

Office 888-696-8695
Local 715-228-3000
Fax 715-228-3004
Car 715-340-6133
landman@uniontel.net
www.thelandman.net
landman@thelandman.net